

Scan Partner 600c Parts Manual Doc No 011-1028-5

Date	Description	Version
16/03/1999	Parts 29,30,31,32 added	A-fel-1
14/03/1999	ADF 3 parts added.	B-fel-1
11/06/1999	Corrections to part numbers	B-fel-2

SUBJECT/PROJECT:		DOC No.: 011-1028-5	
SP 600C		REV No.: B.fel.2	
SPARE PARTS TABLE		PAGE No.: 2/5	
ITEM	PART NAME	AVISION PART NO	QTY SCAN NER
1	ADF FEED ROLLER	088-0020-0	1
2	FEED ROLLER (ADF-2)	088-0002-0	2
2	FEED ROLLER (ADF-3)	088-0002-1	2
3	ADF COVER (ADF-2)	003-0033-0	1
3	ADF COVER (ADF- 3)	003-0161-0	1
4	TOUCH SPRING UNIT PAD (ADF-2)	003-0006-0	1
4	SNAP-IN PAD ASSEMBLE (ADF-3)	003-0162-0	1
5	WHITE REFERENCE STRIP (ADF 7.8x225mm)	061-0012-0	1
6	ADF ASSEMBLY ADF 2	002-0137-0	1
6	ADF ASSEMBLY ADF 3	002-0137-02	1
7	WHITE REFERENCE STRIP (F/B 12x260mm)	061-0011-0	1
8	PAPER OUTPUT CHUTE MODULE	003-0021-0	1
9	INPUT PAPER CHUTE MODULE	003-5077-0	1
10	DOCUMENT COVER MODULE	003-5079-0	1
11	HINGE UNIT (RIGHT)	003-0016-0	1
12	HINGE UNIT (LEFT)	003-0015-0	1
13	UPPER HOUSING MODULE SP600C	003-5073-0	1
14	ADF CABLE	104-0001-0	1
15	HOME POSITION SENSOR CABLE	104-0004-0	1
16	SHIPPING RETAINER	055-0001-0	1
17	HOME POSITION BOARD (SB02 PCBA)	004-0033-0	1
18	DC POWER CABLE (use with 003-2011-0 only)	104-0084-0	1
19	PSU (S.W.P. SCAN-60-B FULL RANGE, 60W OPEN FRAME)	003-2011-0-B	1
20	LED DISPLAY BOARD (LB01 PCBA)	004-0007-0	1
21	LED CABLE	104-0003-0	1
22	MAIN BOARD ASSEMBLY (PCBA, MB71-25) SUPPLIED WITH FIRMWARE 1.06 & 2.0 OR LATER	003-5172-0	1
23	BOTTOM HOUSING (W/RUBBER STAND)	003-0076-0	1
24	POWER SWITCH/SOCKER UNIT	003-0063-0	1
25	OPTICAL SUBASSEMBLY	002-0139-0	1
25-1	OPTICAL UNIT	003-5075-0	1
25-1-1	TRANSMITTING BELT 453 MXL	057-0002-0	1
25-1-2	FFC CABLE	104-0047-0	1
25-2	INVERTER & LAMP ASSEMBLY	002-0138-0	1
25-2-1	CCFL ASSEMBLY	003-5076-0	1
25-2-2	CCFL INVERTER UNIT	003-0078-0	1
26	MOTOR MODULE	002-0125-0	1
27	IDLER PULLEY MODULE	003-0019-0	1
28	ADF MICROSWITCH AND CABLE	003-0009-0	1
29	ADF MOTOR	065-0023-0	1
30	ADF TIMING BELT (85MXL)	057-0004-0	1
31	ADF PCBA	004-0088-0	1
32	TIMING BELT (SMALL)	057-0005-0	1
A	AC POWER CORD 125V (UL)	104-0011-0	1
A-1	AC POWER CORD 250V (VDE)	104-0012-0	1
A-2	AC POWER CORD 250V (BSI)	104-0013-0	1
A-3	AC POWER CORD 250 (AUS)	104-0022-0	1
A-4	AC POWER CORD 125V (JIS)	104-0044-0	1
B	SCSI CABLE 50-25P (OPTIONAL)	104-0031-0	1
C	PACK ASSEMBLY	003-0124-01	1

SUBJECT/PROJECT: SP 600C SPARE PARTS TABLE		DOC No.: 011-1028-5	
		REV No.: B.fel.2	
		PAGE No.: 2/5	
ITEM	PART NAME	AVISION PART NO	QTY SCAN NER
D	CARTON (SP600C)	073-0096-0	1
E	SCSI CARD ASSEMBLY	002-05533-0	1
*	SHIPPING RETAINER REMOVAL CARD	255-0004-0	1

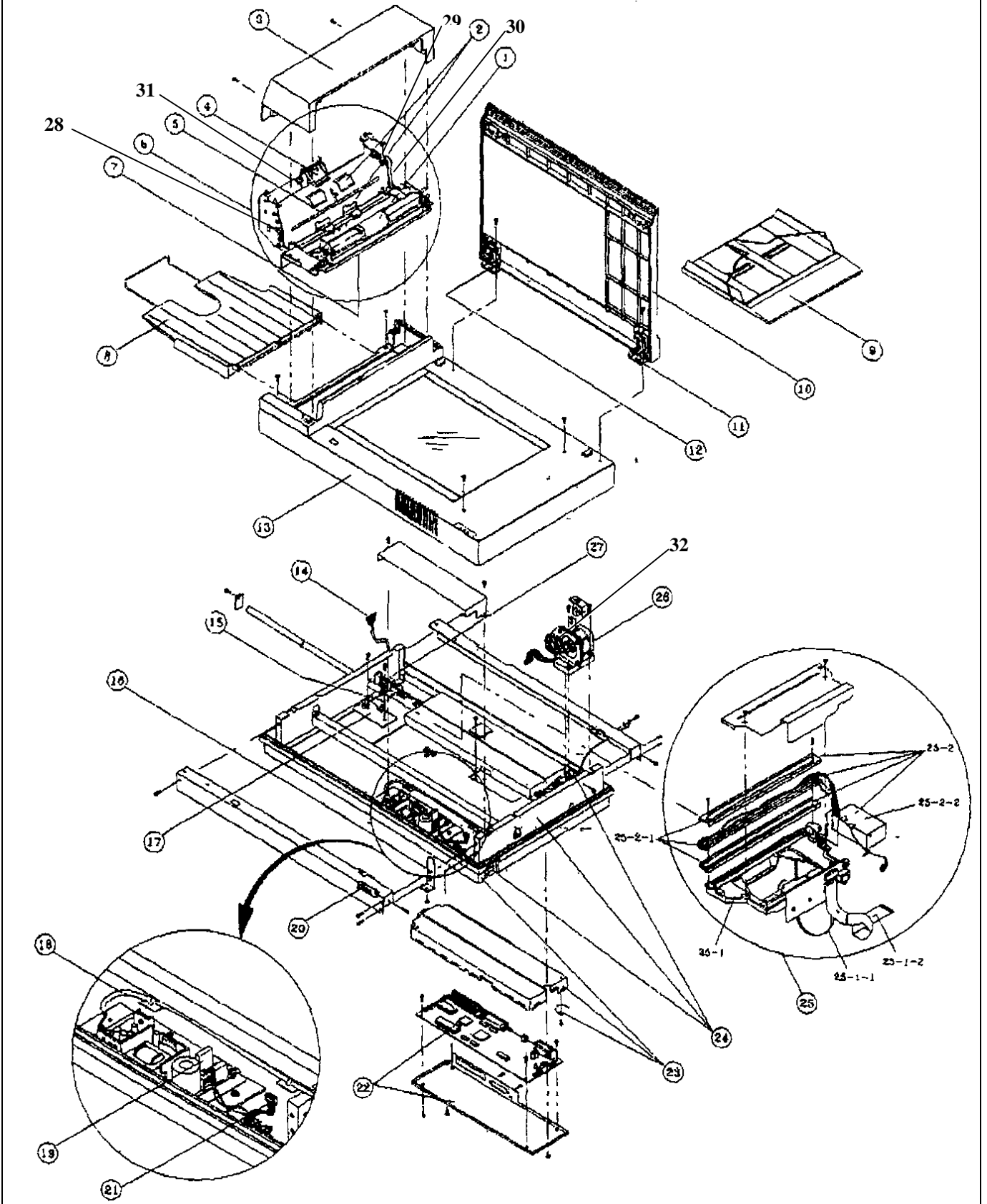
SUBJECT / PROJECT:

SP 600C
SPARE PARTS TABLE

DOC. No.: 011-1028-5

REV.: B.fel.2

PAGE No.: 4/5



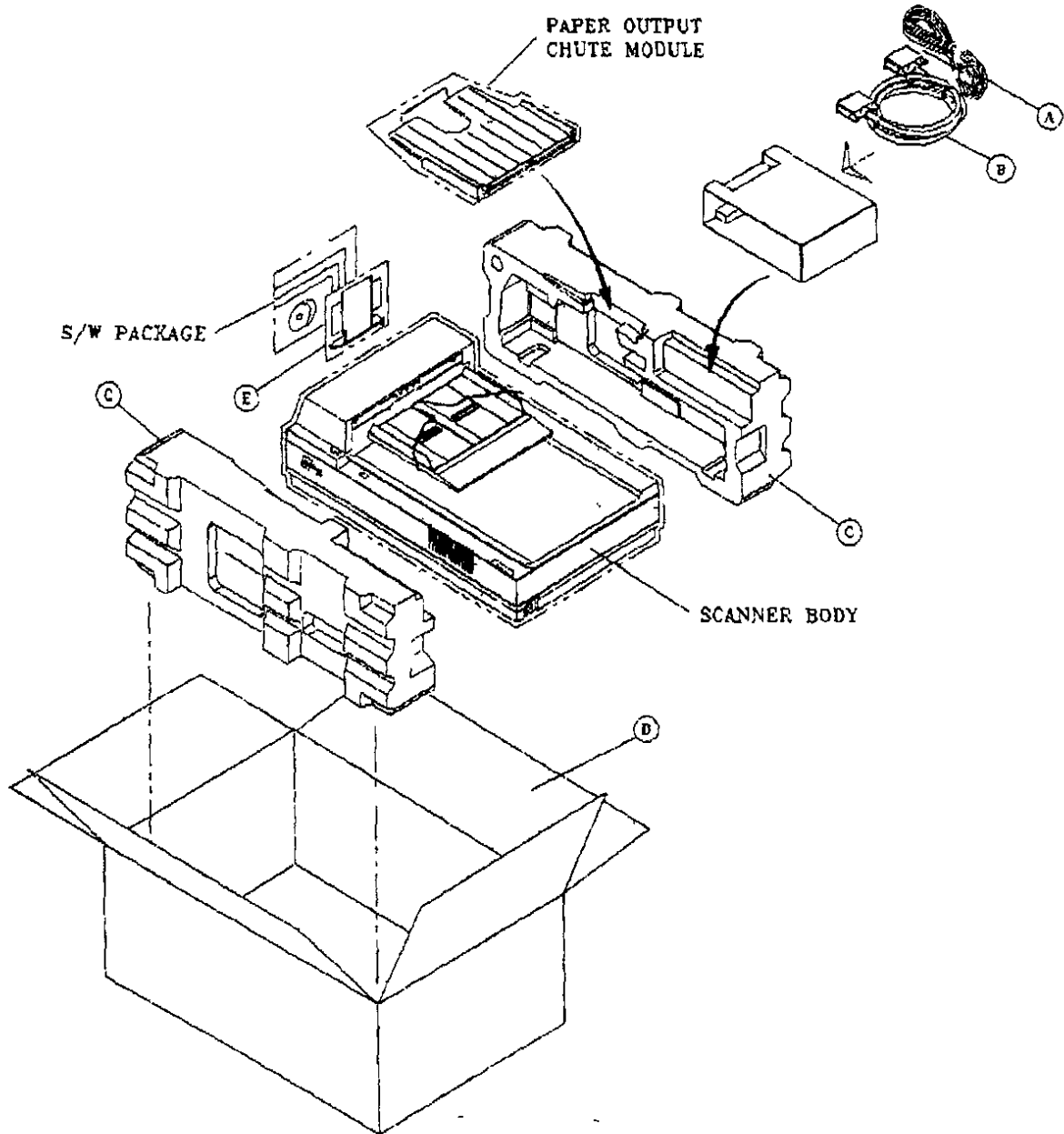
SUBJECT / PROJECT:

**SP 600C
SPARE PARTS TABLE**

DOC. No.: 011-1028-5

REV.: B.fel.2

PAGE No.: 5/5



NOTES

- 1 SCANNER LxWxH=568x348x165 MM
(22 36"x13 7"x8 54")
- 2 SCANNER N W 12 KGS (26 5 lbs)
SCANNER G W 15 KGS (33 1 lbs)